

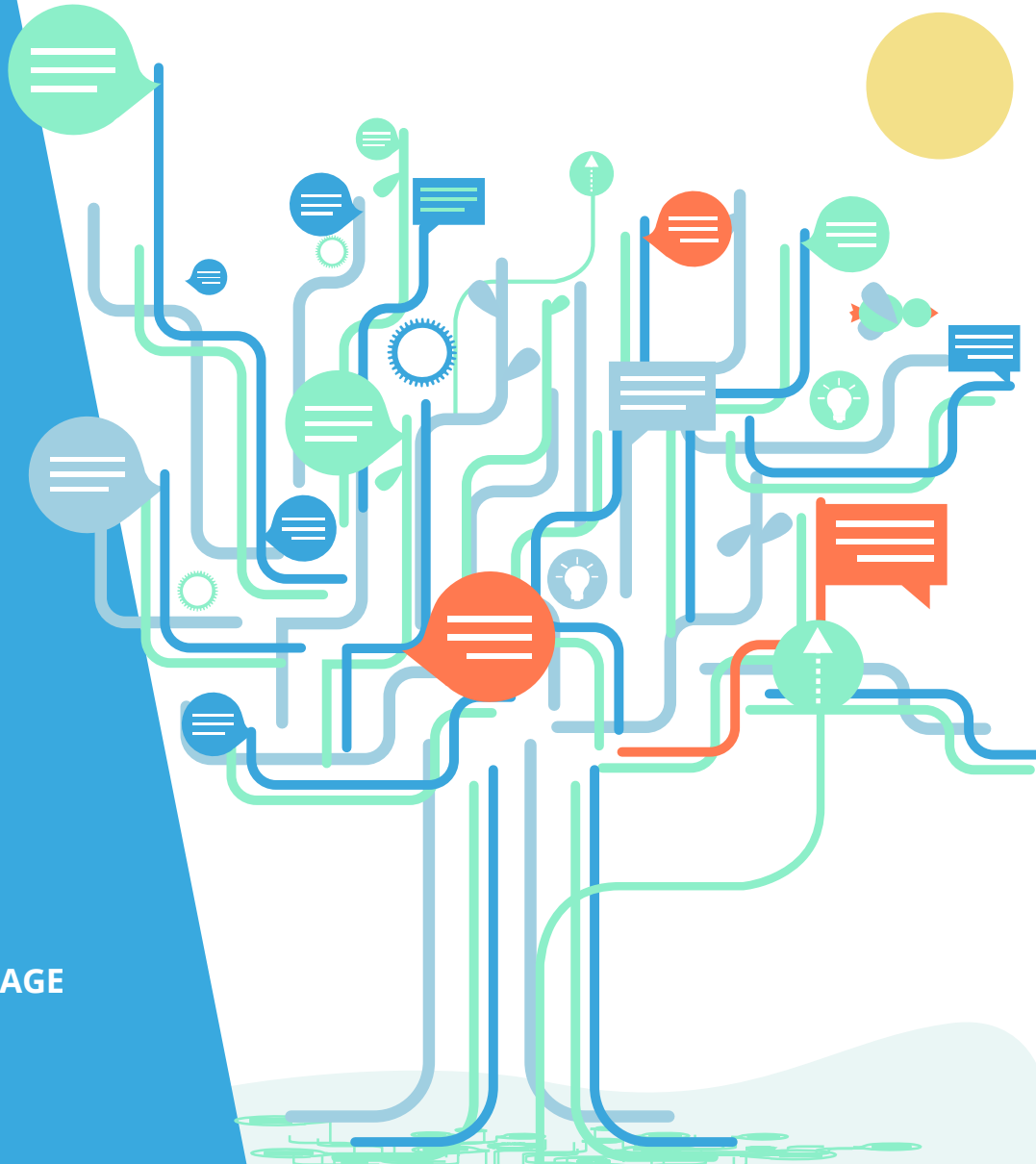
I love weekends!

READING

LEVEL
Beginner

NUMBER
A1_1044R_EN

LANGUAGE
English





Goals

- Read about Kim's schedule
- Talk about your schedule







What day is it? What time is it?

weekdays

Saturday

weekend

Sunday

work



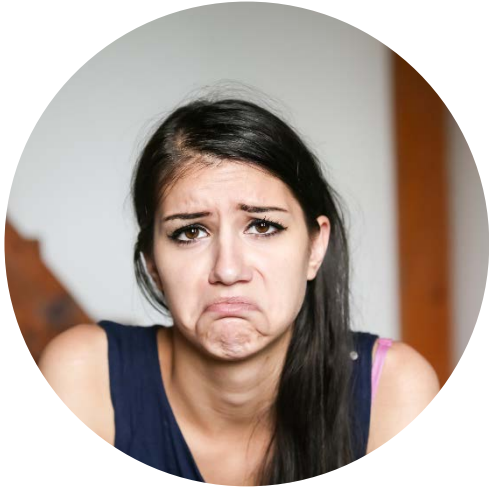
quarter to

o'clock

half past



I don't like work



I don't like **weekdays**.

I **work** during the **week**.





I work during the week



I work on **Monday, Tuesday, Wednesday, Thursday, and Friday.**

I work from seven **o'clock** until six **o'clock.**



I jog between a **quarter past six** and seven **o'clock.**

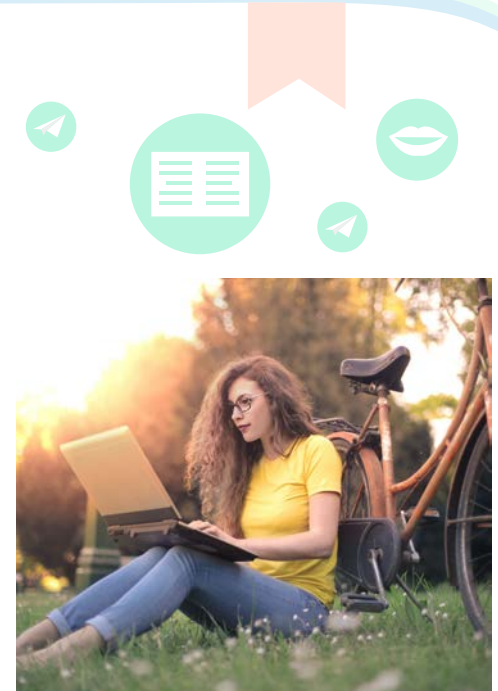
I go to sleep at eleven **o'clock.**





My name is Kim and I don't like weekdays

I don't like weekdays. I go to work during the week. I work on **Monday, Tuesday, Wednesday, Thursday** and **Friday**. I work from 7AM until 6PM. I wake up at six o'clock every day during the week. I ride my pink bicycle to work. I usually arrive at work around ten to seven. I eat breakfast and lunch at my desk. I come home at half past seven. I jog between a quarter past six and seven o'clock with the dog. We eat supper every evening at a quarter to eight. I watch TV with Tim after supper. I brush my teeth at five to eleven. I go to sleep at eleven o'clock.



Kim works hard.



Does Kim like weekdays?

TRUE

FALSE

1. Kim likes weekdays.

2. Kim works on Wednesday.

3. Kim takes a bus to work.

4. Kim jogs before supper.

5. Kim goes to sleep at midnight.



Which day is not a weekday?

Thursday

Saturday

Friday

Tuesday



When does Kim...?

1. Kim works from _____ to 6PM.
2. She wakes up at _____.
3. She arrives at work around _____ seven.
4. She comes home at _____ seven.
5. She eats supper at a _____ eight.
6. She goes to sleep at eleven _____.



ten to

quarter to

six o'clock

o'clock

7AM

half past



I relax on Saturday

My favourite days of the week are **Saturday** and **Sunday**. I don't have to work on these two days. I wake up at eight o'clock on Saturday morning. I eat breakfast at eight thirty. I take our dog for a walk in the park after breakfast. He loves it. I play with the dog until lunch time. I meet my friends for lunch on **Saturdays**. We go shopping after lunch for new clothes or shoes. We shop for hours. We go to a café to drink coffee and eat cake after shopping. Sometimes we go to a bar to drink a glass of wine or beer.





Kim's Saturday plans

1. On the weekends, Kim eats breakfast at...

a. a quarter past eight

b. half past eight

2. On Saturday, Kim takes her dog for a walk...

a. after breakfast

b. after lunch

3. Kim goes shopping with friends...

a. after breakfast

b. after lunch



What are your favourite days? What do you do on that day?

Monday

Friday

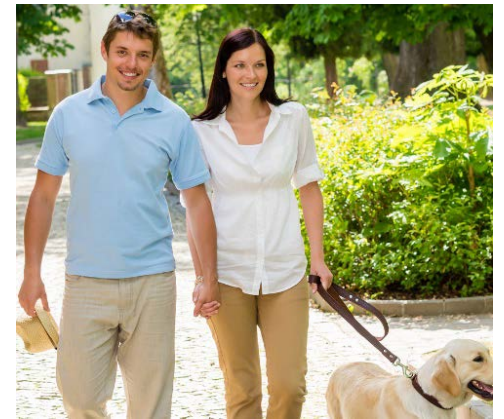
Saturday

Sunday



I spend Sunday with Tim

On Sundays I eat breakfast with Tim in our home. We walk the dog together after breakfast and play with him in the park. We always visit Tim's parents on Sundays. We eat Sunday lunch with Tim's family. Tim and I like to walk around the city after lunch. We visit museums or go to cafes. We always eat dinner in a restaurant on Sundays. I always ask for the lasagne with cheese and no meat. Tim always orders pizza with ham or salami. After dinner, we go to the cinema to watch a movie. I love weekends.





Write the days of the week

Weekdays

Weekend



What is your schedule?

I work from _____ until
_____.

I wake up at _____ every day
during the week.

I usually arrive at work around
_____.

I eat lunch at _____.

I come home at _____.

I eat supper every evening at
_____.

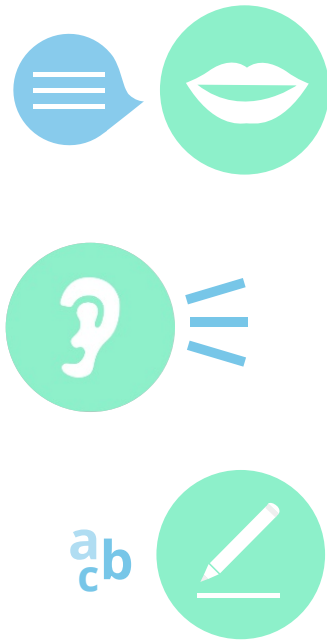
I go to sleep at _____.





Dictogloss

Your teacher is going to read to you.
Write down what you hear them say.



Listen up!





Reflect on the goals

Go back to the second slide of the lesson and check if you have achieved all the goals of the lesson.

yes

no

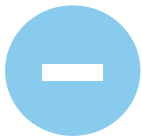
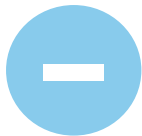




Reflect on this lesson

Think about everything you have seen in this lesson.
What were the most difficult activities or words? The easiest?



If you have time, go over
the most difficult slides again





Answer key

Exercise p. 8. 1. F 2. T 3. F 4. T 5. F

Exercise p. 9. Saturday

Exercise p. 10. 1. seven o'clock 2. six o'clock 3. ten to 4. half past 5. quarter to 6. o'clock

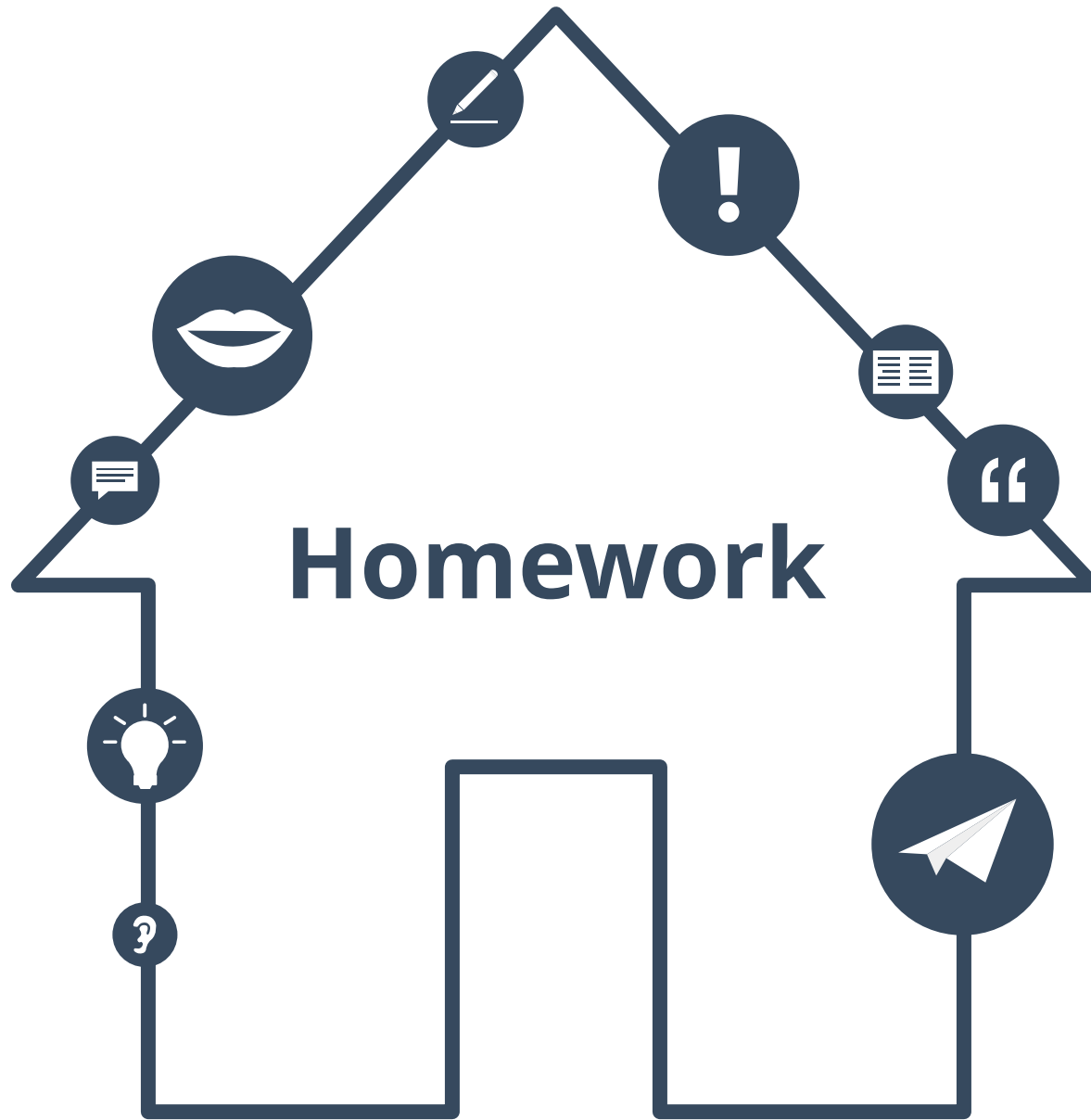
Exercise p. 12. half past eight 2. after breakfast 3. after lunch

Exercise p. 15. Weekdays: Monday, Tuesday, Wednesday, Thursday, Friday.
Weekend: Saturday, Sunday.



Listening transcript

I work from 7AM until 6PM. I wake up at six o'clock every day during the week. I ride my pink bicycle to work. I usually arrive at work around ten to seven. I eat breakfast and lunch at my desk. I come home at half past seven. I jog between a quarter past six and seven o'clock with the dog. We eat supper every evening at a quarter to eight. I watch TV with Tim after supper. I brush my teeth at five to eleven. I go to sleep at eleven o'clock.





Transform these sentences from the text using /

1. Kim doesn't like weekdays.



2. Kim wakes up at six o'clock AM.



3. Kim rides her pink bicycle to work.



4. Kim eats lunch at her desk.



5. Kim takes her dog to the park.



6. Kim goes shopping for new shoes.



7. Kim always asks for the lasagne.



8. Kim loves weekends.





My favourite sentences

**Choose your five favourite sentences
from the three pieces of text.**

A vertical rectangular area representing a sheet of lined paper. On the left side, there are ten circular punch holes. The rest of the area is filled with horizontal lines, providing space for writing.



My favourite character

**Who is your favourite character in the text?
What does he or she do in this text?**

My favourite
character is...

He is...

He does...

She is...

He is not...

She does...

A vertical sheet of white paper with a spiral binding on the left side and horizontal lines for writing.



Easy or difficult?

Is the text easy to understand?

Is the text difficult to understand?

Write down an easy sentence and a difficult sentence.

A vertical sheet of white paper with a spiral binding on the left side and horizontal lines for writing.



Exercise p. 23. 1. I don't like weekdays. 2. I wake up at six o'clock AM. 3. I ride my pink bicycle to work. 4. I eat lunch at my desk. 5. I take my dog to the park. 6. I go shopping for new shoes. 7. I always ask for the lasagne. 8. I love weekends.



About this material



Find out more at
www.lingoda.com

This material is proudly provided by

lingoda

and can be used by anyone for free and
for any purpose.

lingoda Who are we?



Why learn English online?



What kinds of English classes do we offer?



Who are our English teachers?



How do our English certificates work?



We also have a language blog!